



**Publication:** The Straits Times (Home)

**Date:** Nov 5 2007

**Headline:** On show: Rare Buddhist artefacts

# On show: Rare Buddhist artefacts

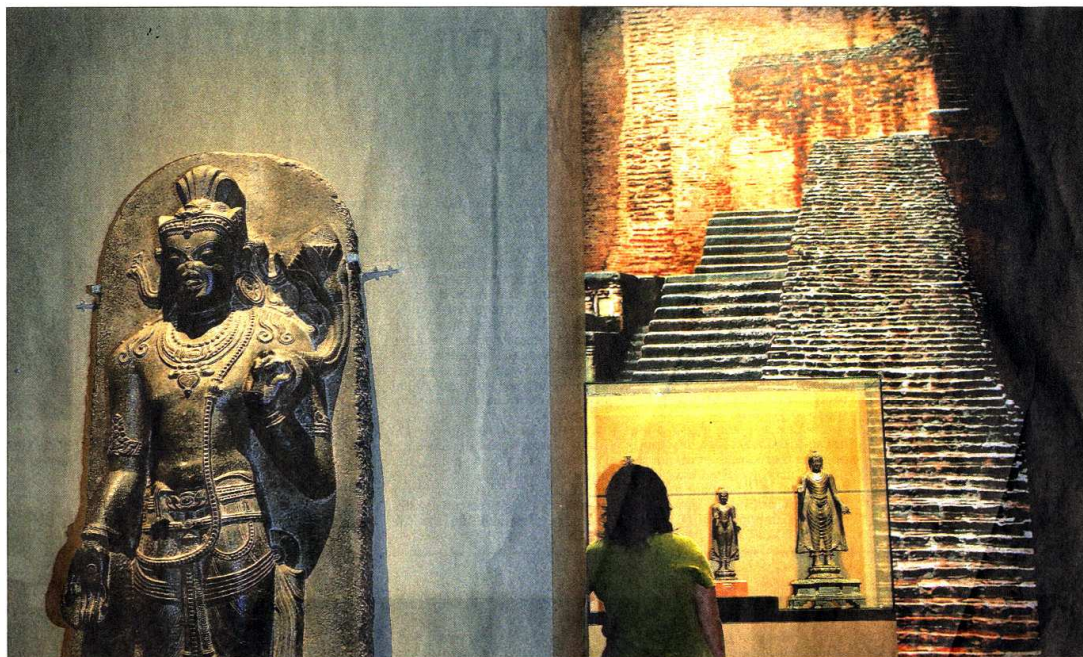
Rare Buddhist artefacts are on show at the exhibition, *On The Nalanda Trail: Buddhism In India, China And South-east Asia*.

It focuses on the spread of Buddhism from India to China and South-east Asia, and the pivotal role played by the ancient university of Nalanda in India, a key centre of Buddhist learning, which attracted Buddhist pilgrims from far and wide more than 800 years ago.

Highlights of the exhibition include bone relics of Buddha and a stunning display of Buddhist art, including paintings from the famous Dunhuang grottoes in China.

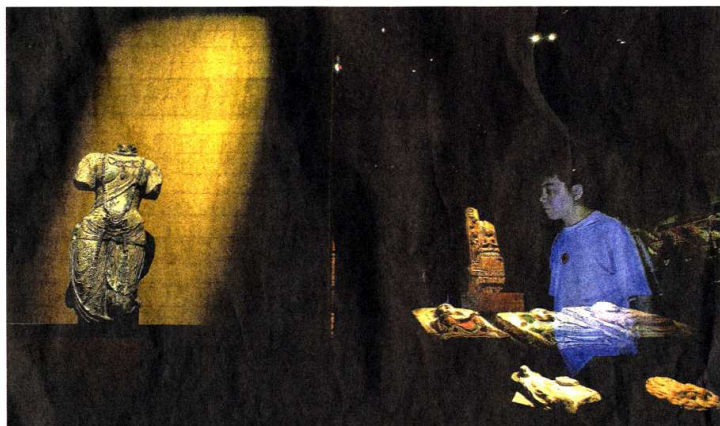
Many of the artefacts are being shown outside India for the first time.

The exhibition, which opened at the Asian Civilisations Museum on Friday, runs till March 23 next year.



ST PHOTOS: LIM WUI LIANG

**SOURCE OF WISDOM:** Of special significance in Chinese Buddhism, the 9th-century basalt statue of Manjushri (left) from Bihar, India, stands outside a mural featuring the exterior of a monastery in Nalanda, India. Manjushri, also spelt Manjusri, is a bodhisattva who represents wisdom, intelligence and realisation.



**RADIANT:** A visitor walks past clay figurines of Buddha (right) from the Silk Road, towards a Tang Dynasty limestone torso of a bodhisattva – a person who, motivated by love, seeks enlightenment for all.



**SACRED SCRIPTS:** Other than artefacts, rare sutras like this from China, written during the Tang Dynasty, are also on display. Sutas are holy texts containing Buddhist teachings, which devotees recite and study regularly.